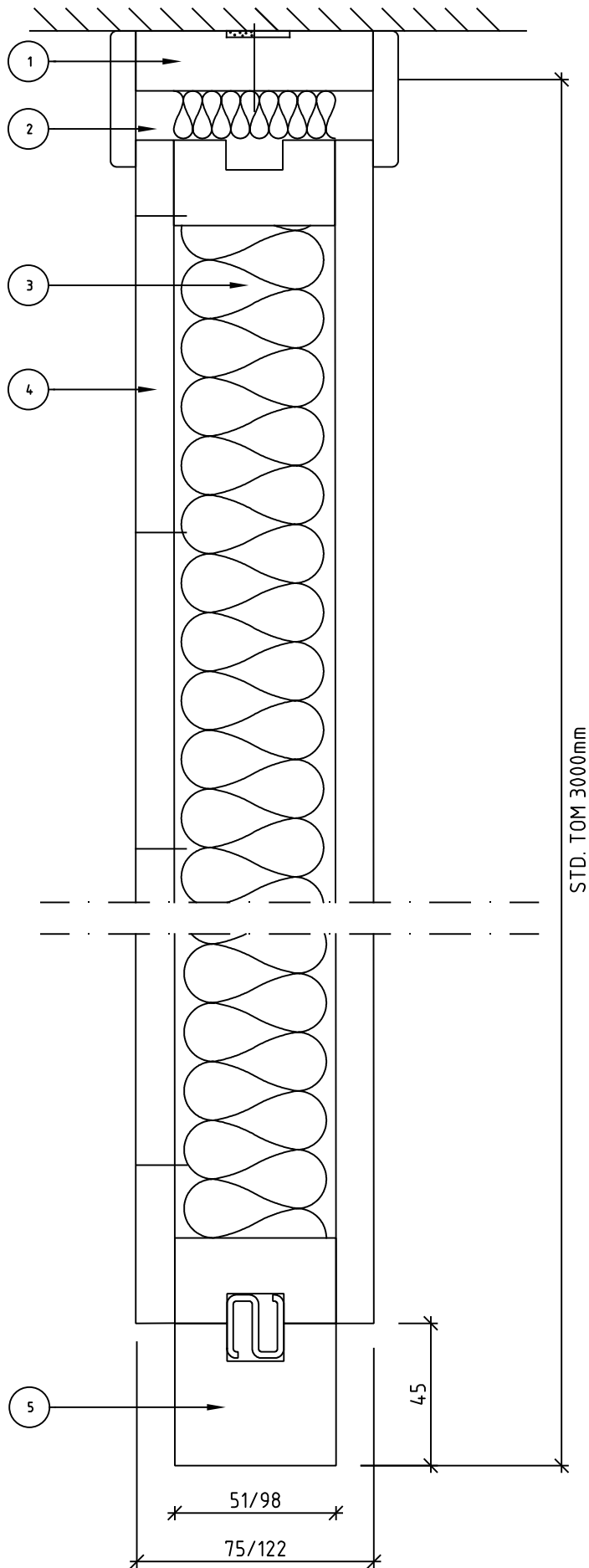
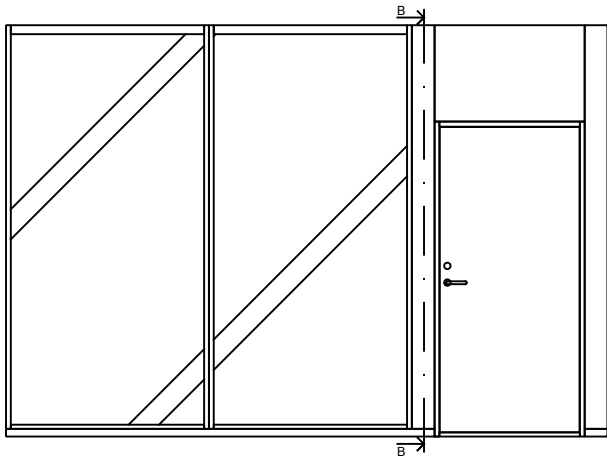


FÖRKLARINGAR

- 1 TAKANSLUTNING
- 2 DREVNING
- 3 TÄTNINGSLIST

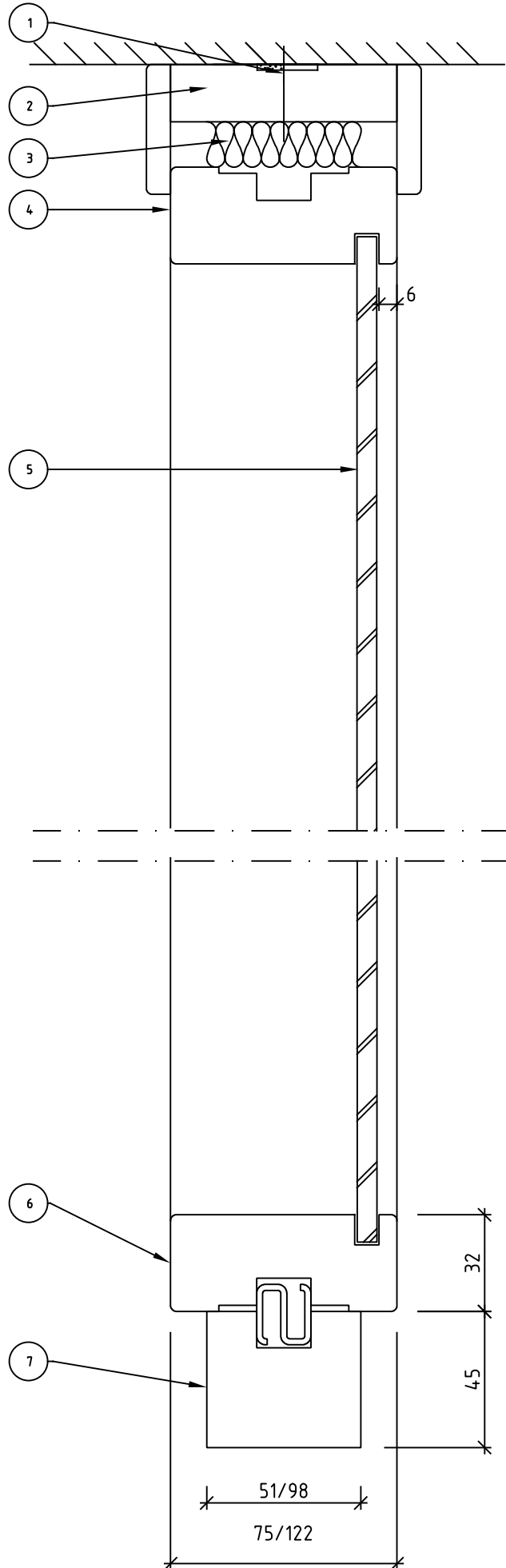
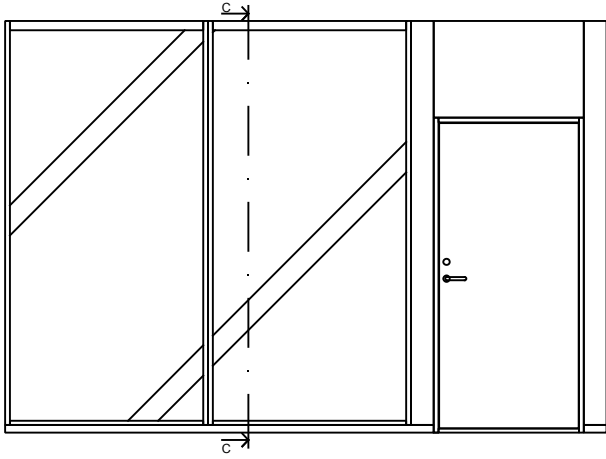


FÖRKLARINGAR

ELZON - SKRUVAD EN SIDA, LIMMAD EN SIDA

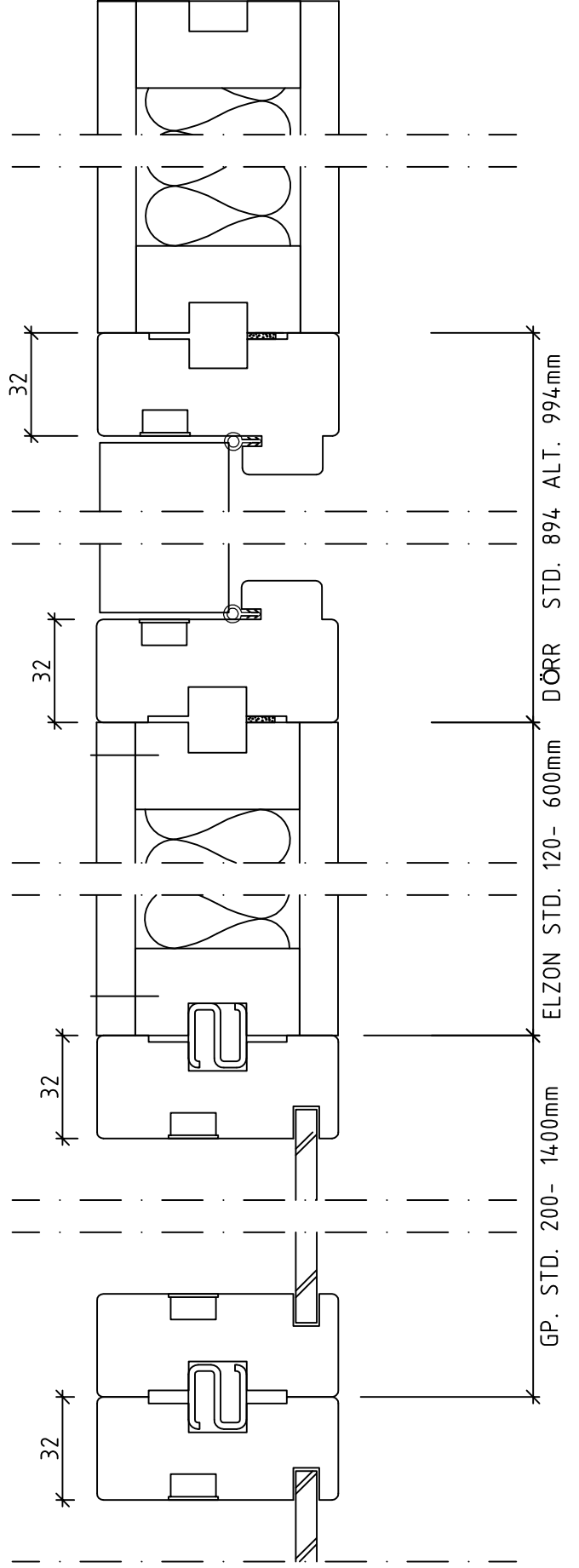
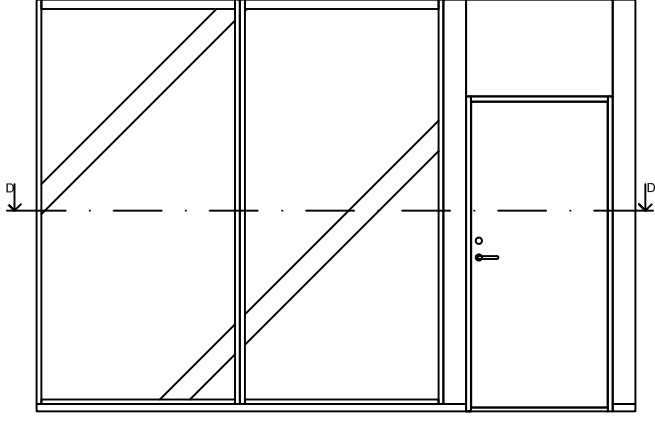
- 1 TAKANSLUTNING
- 2 DREVNING
- 3 MINERALULL 45mm.
- 4 LACKERAD ALT. FANERAD SKIVA
- 5 GOLVUTLÄGG

SEKTION B-B

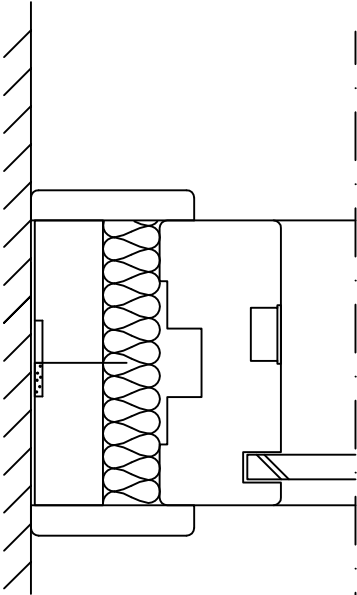
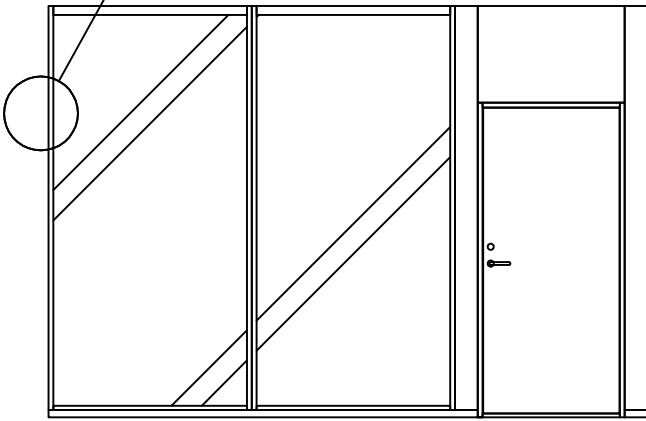


FÖRKLARINGAR

- 1 INFÄSTNING TAK
- 2 TAKANSLUTNING
- 3 DREVNING
- 4 LACKERAD ALT. MASSIV KARM
- 5 GLAS, TYP BEROENDE PÅ FUNKTIONSKRAV
- 6 LACKERAD ALT. MASSIV KARM
- 7 GOLVUTLÄGG

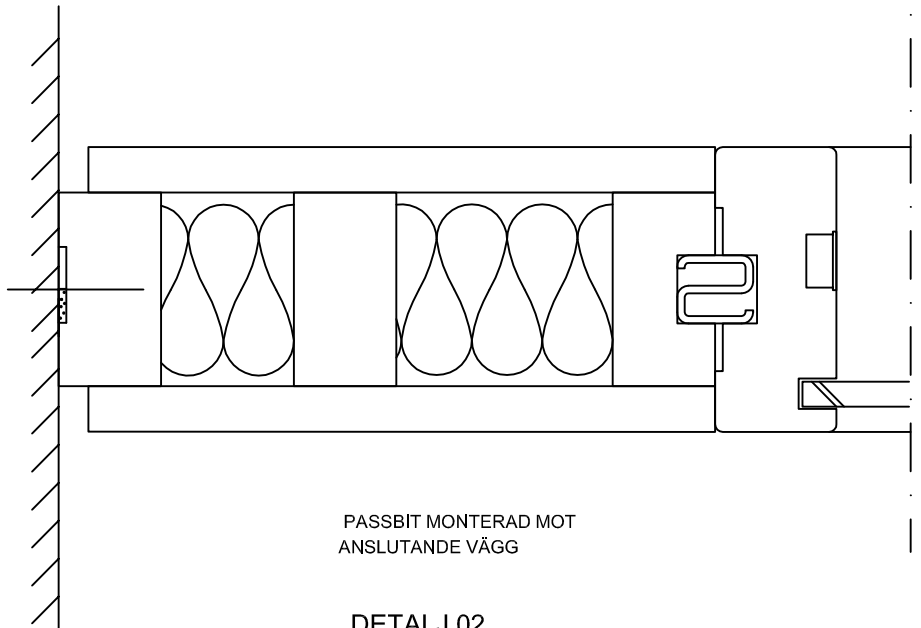


ENL. DETALJ 01-02



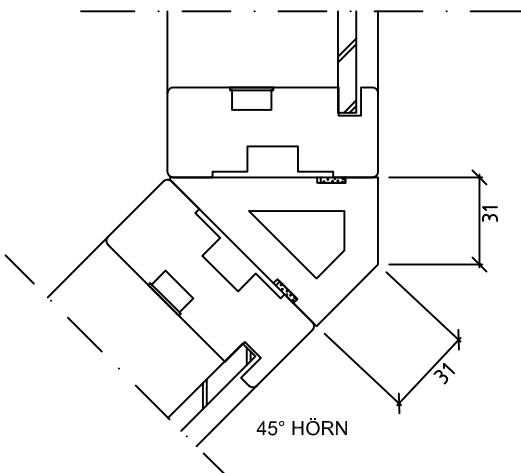
GP MONTERAD MOT
ANSLUTANDE VÄGG

DETALJ 01.

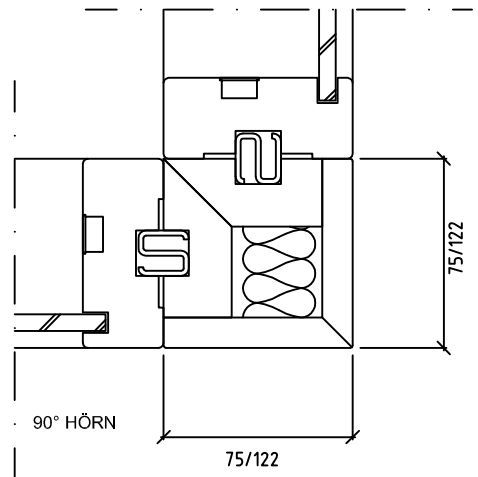


PASSBIT MONTERAD MOT
ANSLUTANDE VÄGG

DETALJ 02.

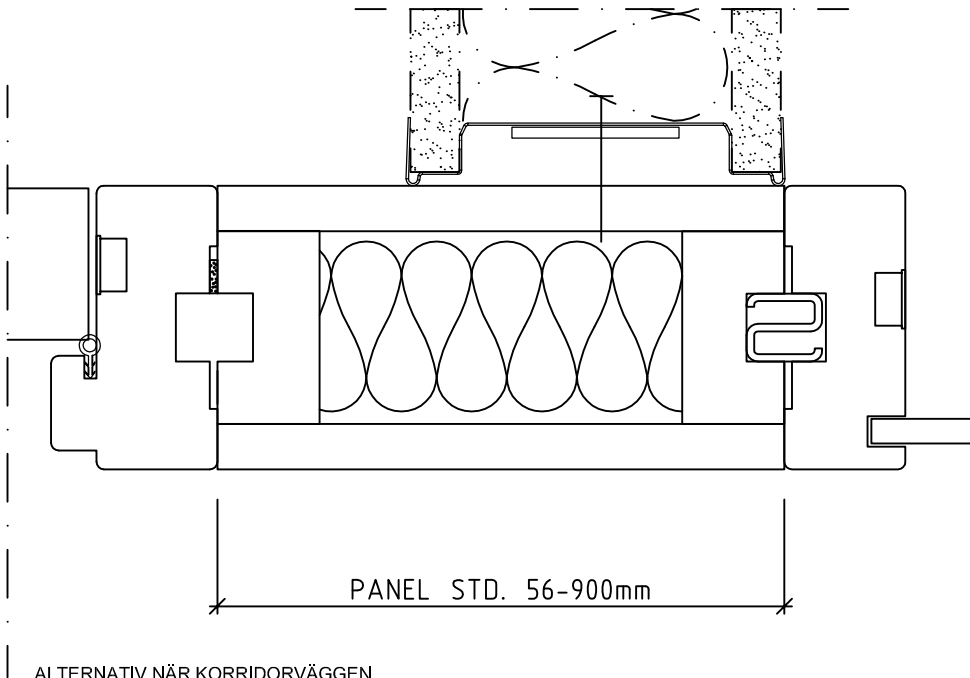
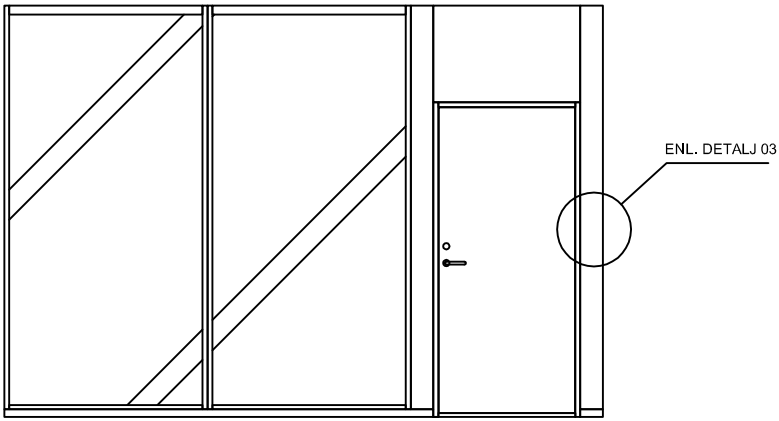


45° HÖRN



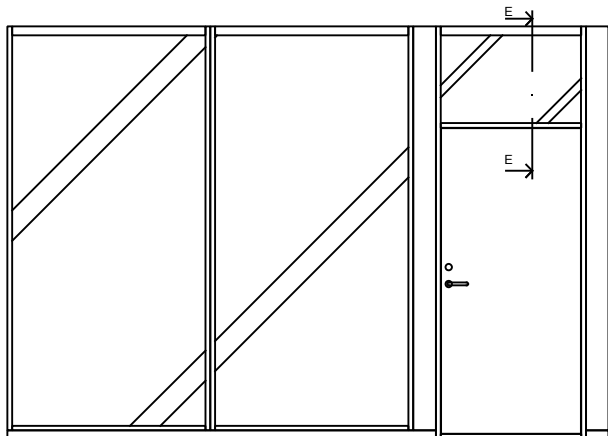
90° HÖRN

75/122



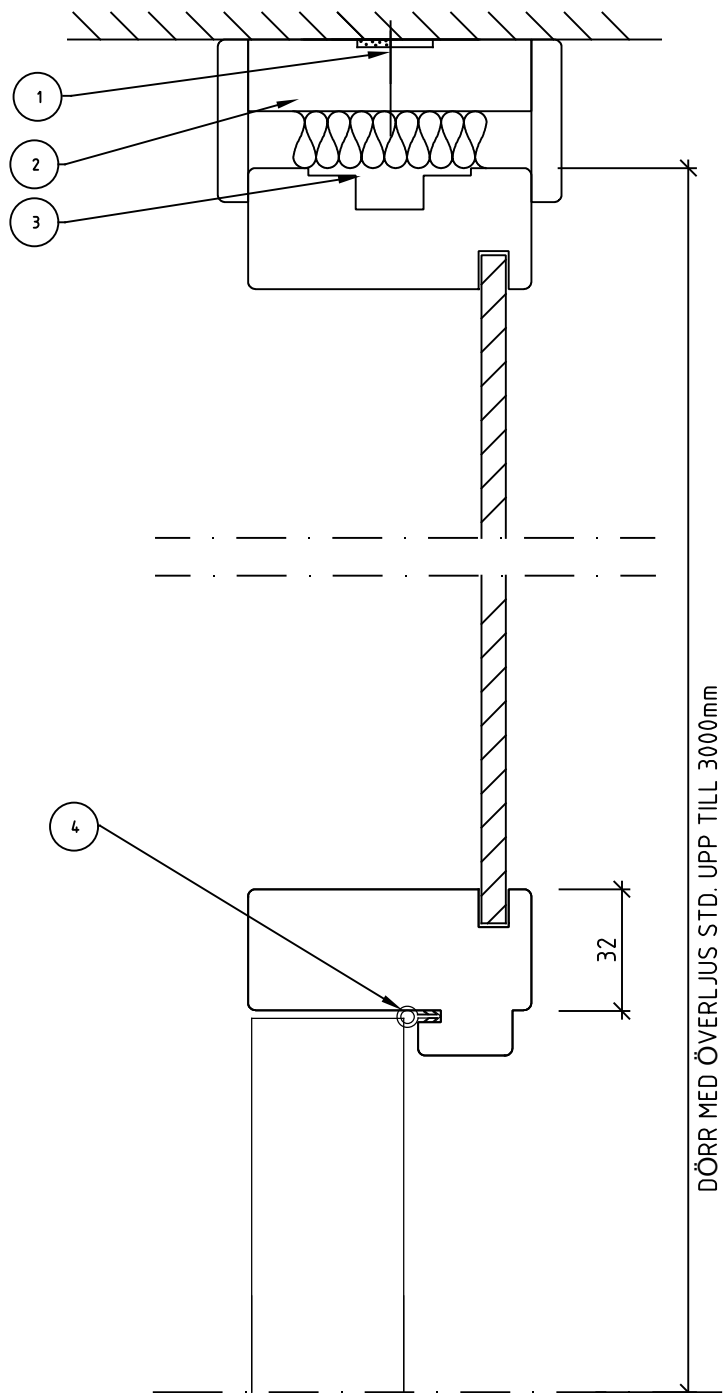
ALTERNATIV NÄR KORRIDORVÄGGEN
FORTSÄTTER MED DÖRR, GLASPARTI OCH
ANSLUTANDE MELLANVÄGG

DETALJ 03.



FÖRKLARINGAR

- 1 INFÄSTNING TAK
- 2 TAKANSLUTNING
- 3 DREVNING
- 4 TÄTNINGSLIST



ALT: SEKTION E-E

DÖRRKARM MED ÖVERLJUS MOT
ANSLUTANDE TAK